

Feature Function

- Large 7" TFT LCD (800 * 480)
- Snap shot and Audio / Video recording (640 * 480)
- LED brightness adjustment
- 5X Zoom in, Mirror image and Image rotation
- USB to PC connection
- Long duty hour up to 6 hrs
- AV OUT



Standard Accessories



Series Accessories



Application

- Automobiles • Aircrafts • Ships • Railways • Welding • Architecture
- Mechanical equipment • Generators • Electricity • Manufacture
- General equipment • Gas, petroleum, and chemicals
- Defense, security, and surveillance
- Exploration, education, and research and experiments.



Video Output

Recorded video & images can be displayed directly to a TV screen for large screen viewing. Support " PAL " / " NTSC " video system.



Live View Software

Live view software with snap-shot, video recording and playback function.



USB Connection

JK Series is capable to transfer captured images and view from PC. Support Windows 2000™ or later version. No specific software is required to palyback the JPG and ASF files.



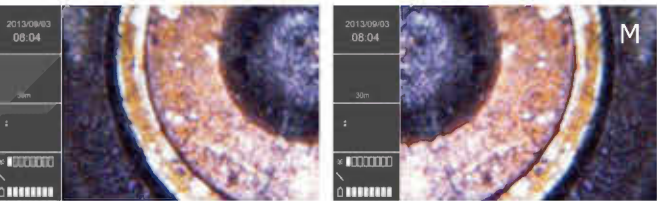
Large 7" TFT LCD Display
(800 * 480 pixel)

Embedded with 7" TFT LCD Monitor provides superior image quality photos for inspector to see.



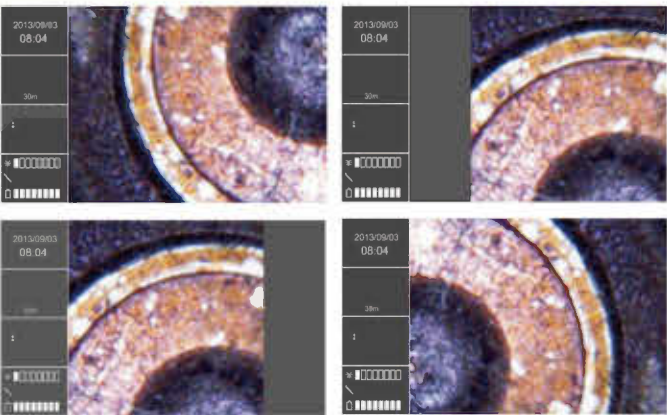
Mirror Image

Support mirror image to correct the dirrection of probe.



Screen Image Rotation Ability

Features image rotation allowing user to turn image into four directions 90°, 180°, 270° and 360°. No need to rotate camera probe anymore.



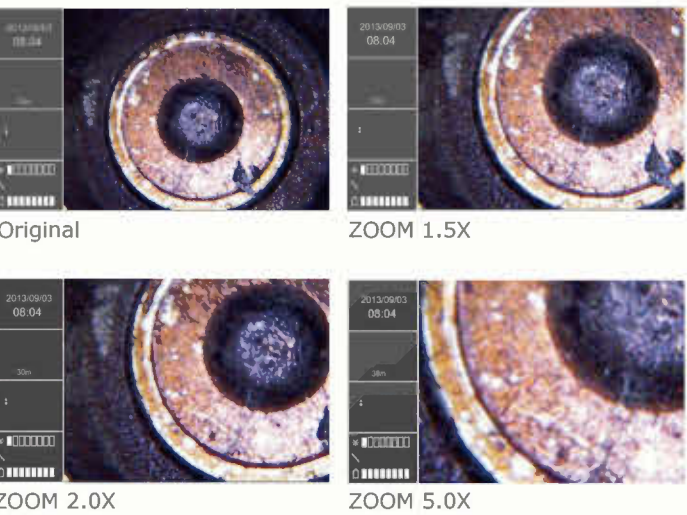
Measure Software Kit (Optional)

Inspection Management Software is designed for image viewing, distance measuring, and image comparison. It helps inspectors to verify measurement after leaving the inspection site.



Three stages 5.0X Zoom - In

Support 1.5X, 2.0X, 5.0X digital zoom.



Light and Handy

Weighing just 1.18kg with Hand strap and Neck strap allows users to more easily use.



| Main Console System (Display) | |
|---------------------------------|--|
| Display | 7" TFT LCD (800 x 480) |
| Image Storage Format | 640 * 480, JPEG |
| Video Recording Format | 640 * 480 , MPEG4 (with audio) |
| Storage | 8 GB SD card (up to 32 GB) |
| USB | Live view mode (optional software) Mass storage mode |
| Interface | USB2.0 / AV Out |
| Audio Input / Oupput | Built-in microphone / Headphone Jack |
| Brightness Adjust | 10 levels |
| WaterProof | IP57 standard |
| Drop test | 1 meter |
| Working temperature | -10 ~ 60°C |
| Storage temperature | -20 ~ 80°C |
| Battery | Built-in Li-polymer Battery 6 hours capacity / 3 hours charge to full |
| Languages | 27 Languages: English / French / German / Italian / Spanish / Portuguese / Japanese / Traditional Chinese / Simplified Chinese / Danish / Dutch / Polish / Russian / Bulgarian / Turkish / Swedish / Finnish / Norwegian / Estonian / Lithuanian / Latvian / Hungarian / Czech / Slovak / Slovenian / Romanian / Greek |
| Dimension | 240 * 154 * 47mm |
| Weight | 1.18 kg (2.6 lb) |

Insertion Probe Options

| Probe | Material | Probe Diameter | Tube Length | Detail |
|--------------------------|-----------------|--|-------------------------------------|------------|
| General Probe | Soft-Metal | Φ 5.5 mm | 1m / 2m / 3m / 5m / 10m / 20m / 30m | P. 17 - 18 |
| General Probe | Semi-Rigid | Φ 3.9 mm / Φ 5.5mm / Φ 8.5 mm | 1m / 2m / 3m | P. 17 - 18 |
| Dual-Camera Probe | Semi-Rigid | Φ 4.9 mm | 1m / 2m / 3m | P. 19 |
| 2 Way Articulation | Soft-Metal | Φ 6.0 mm | 1m / 2m / 3m | P. 20 |
| 2 Way Articulation (VGA) | Soft-Metal | Φ 6.0 mm | 1m / 2m / 3m | P. 21 - 24 |
| VGA Probe | Soft-Metal | Φ 5.5 mm | 1m / 2m / 3m / 5m | P. 22 - 24 |
| VGA Probe | Semi-Rigid | Φ 5.5 mm | 1m / 3m | P. 22 - 24 |
| VGA Probe (Near Focus) | Soft-Metal | Φ 5.5 mm | 1m / 3m | P. 22 - 24 |
| VGA Probe (Near Focus) | Semi-Rigid | Φ 5.5 mm | 1m | P. 22 - 24 |
| Pipe Inspection Probe | Hard Soft-Metal | Φ 6.0 mm, Φ 22 mm (camera head) Φ 6.0 mm, Φ 28 mm (camera head) | 22m 5m / 10m / 22m / 30m | P. 25 - 28 |



Φ 3.9 mm Probe
Front view / Side view
(Semi - rigid)
1m / 2m / 3m



Φ 5.5 mm Probe
(Semi - Rigid)
1m / 2m / 3m



Φ 5.5 mm Probe
Front view / Side view
(Soft - Metal)
1m / 2m / 3m / 5m / 10m / 20m / 30m



Φ 8.5 mm Probe
(Semi - Rigid)
1m / 2m / 3m



3.9 mm Extremely Small

It's the smallest diameter Insert Probe on the market, only Ø3.9mm.



3.9 mm



Other diameter



JF Series



JK Series



JL Series



JM Series

Front / Side View optional

You can select the corresponding camera in accordance with the circumstances you need.
Only for Ø3.9mm, Ø5.5mm



90° Side View



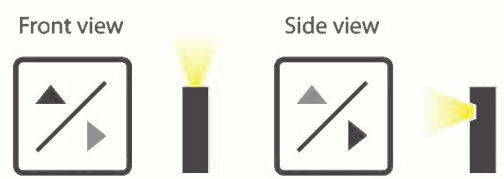
Front View

| Insertion tube & Camera System | | | |
|---|---|---|-------------------|
| Diameter | Φ 3.9 mm Extremely small | Φ 5.5 mm | Φ 8.5 mm |
| Material | Semi-Rigid (SR) | Soft-Metal (SM) Semi-Rigid (SR) | Semi-Rigid (SR) |
| Type of Camera | Front / Side view | SM : Front / Side view SR : Side view | Front view |
| Length | 1m / 2m / 3m | SM : 1m / 2 m / 3m / 5m 10m / 20m / 30m SR : 1m / 2m / 3m | 1m / 2m / 3m |
| Light Source | Front view: White LED * 3 Side view: White LED * 2 | Front / Side view White LED * 4 | White LED * 6 |
| F.O.V | 57 ° | | |
| D.O.F | 1 ~ 6 cm | | |
| Frame Rate | ~ 30 fps | | |
| Exposure | Automatic | | |
| White Balance | Fixed | | |
| Resolution Pixels (Dynamic / Static) | QVGA (320 * 240) | | |
| Image Sensor | CMOS Image Sensor | | |
| Main Console | JF Series, JK Series, JL Series, JM Series | | |

SM = Soft-Metal, SR = Semi-Rigid

Dual - Camera

One Click Switch



Daul Cameras Probe
(Semi - Rigid)
1m / 2m / 3m

| Insertion tube & Camera System | |
|--------------------------------|--|
| Diameter | Φ 4.9 mm |
| Type of Camera | Daul Cameras (Front & Side view) |
| Camera Resolution | 320 * 240 |
| Head Length | 28 mm |
| Head Material | Stainless steel |
| Connector | Metal |
| Light Indicate | Green light (forward view), Red light (side view) |
| Light Source | Forward: 140-224 mcd*2 LED Side: 210-330 mcd*1 |
| Length | 1m / 2m / 3m |
| Material | Semi-Rigid |
| F.O.V | Horizontal field angle 45.2° Vertical field angle 34° Diagonal field angle 56° |
| D.O.F | 1 ~ 6 cm |
| Working Temperature | 0°C ~ 55°C |
| Waterproof | IP67 |
| Main Console | JF Series, JK Series, JL Series, JM Series |



0° Frontward view



90° Side view



2 Way Articulation



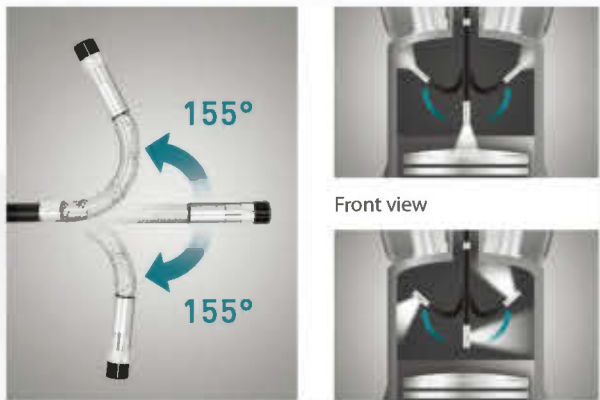
2 Way Articulation Wireless Probe
(Front View / Side View)
1m / 2m / 3m



2 Way Articulation
(Front View / Side View)
1m / 2m / 3m

2 WAY ARTICULATION

2 way articulation probe helping to check angles that hardly can be checked easily (over 300° of view). Front view and Side view optional.



Left / Right 155°

Side view



| Insertion tube & Camera System | | |
|--------------------------------|--|--|
| | 2 Way Articulation Wireless Probe | 2 Way Articulation Probe |
| Type of Probe | Wireless | Wired |
| Type of Camera | Front view / Side view | |
| Diameter | Φ 6 mm | |
| Resolution | 325(H)* 250(V) | |
| Head Material | Stainless steel | |
| Light Source | White LED | |
| Length | 1m / 2m / 3m | |
| F.O.V | Horizontal field angle 45.2° Vertical field angle 34° Diagonal field angle 56° | |
| D.O.F | 1 ~ 6 cm | |
| Material | Soft-Metal | |
| Working Temperature | 0°C ~ 60°C | |
| Articulation Angle | Left: 155° / Right: 155° | |
| Articulation Radius | Front View: 48 +/-1mm / Side View: 60 +/-1mm | |
| Waterproof | IP67 | |
| Dimension | 139.3 * 34.9 * 31.8mm | |
| Weight | 1m-260g / 2m-340g / 3m-420g | 1m-370g / 2m-450g / 3m-530g |
| Battery | Rechargeable Li-Polymer battery 3.7V | None |
| Lightness Control | Variable | None |
| Main Console | JM Series | JF Series, JK Series, JL Series, JM Series |

2 Way Articulation Probe



2 Way Articulation Wireless Probe (VGA)

1m / 2m / 3m

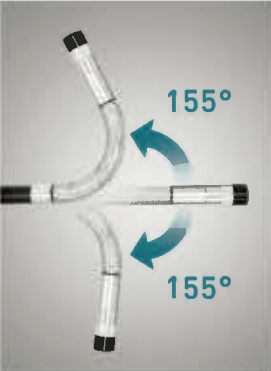


2 Way Articulation Probe (VGA)

1m / 2m / 3m

2 WAY ARTICULATION

2 way articulation probe helping to check angles that hardly can be checked easily (over 300° of view).



Left / Right 155°



Front view

| Insertion tube & Camera System | | |
|--------------------------------|--|---------------------------------|
| | 2 Way Articulation Wireless Probe(VGA) | 2 Way Articulation Probe(VGA) |
| Type of Probe | Wireless | Wired |
| Type of Camera | Front view | |
| Diameter | Φ 6 mm | |
| Resolution | VGA (640 * 480) | |
| Head Material | Stainless steel | |
| Light Source | White LED. 224mcd * 3 LED | |
| Length | 1m / 2m / 3m | |
| F.O.V. | 87.1 degree (Diagonal) | |
| D.O.F | 1 ~ 10 cm | |
| Material | Soft-Metal | |
| Working Temperature | -20 ~ 65 °C | |
| Articulation Angle | Left: 155° / Right: 155° | |
| Articulation Radius | 50mm+ / -5mm | |
| Waterproof | IP67 | |
| Dimension | 139.3 * 34.9 * 31.8mm | |
| Weight | 220g | |
| Battery | Rechargeable Li-Polymer battery 3.7V | None |
| Lightness Control | Variable | None |
| Main Console | JM Series | JF Series, JM Series, JM Series |



JM Series



JK Series



JF Series

Basic / Near Focus



Φ 5.5 mm VGA Probe (Soft-Metal / Semi-Rigid)

SM : 1m / 2m / 3m / 5m
SR : 1m / 3m

| Insertion tube & Camera System | |
|--------------------------------|--|
| Diameter | Φ 5.5 mm |
| Camera Head Length | 20 mm |
| Material | Soft-Metal (SM) / Semi-Rigid (SR) |
| Length | SM : 1m / 2m / 3m / 5m SR : 1m / 3m |
| Head Material | Stainless steel |
| Resolution | VGA (640 x 480) |
| Light Source | White LED. 224mcd * 4 LED |
| D.O.F. | 1 ~ 6cm |
| F.O.V. | 60.7 degree (Diagonal) |
| Working Temperature | -20°C ~ 65°C |
| Waterproof | IP67 |
| Video Out Format | NTSC |
| Main Console | JF Series, JM Series, JM Series |

MATERIAL OF PROBE

Soft-Metal: Soft bendable and resilient.
Semi-Rigid: Bendable and can be in fixed position.

Soft-Metal

Semi-Rigid



Φ 5.5 mm
VGA Near Focus Probe (Soft-Metal / Semi-Rigid)

SM : 1m / 3m
SR : 1m

Near Focus

Near Focus / Short Focus Probe is suitable for a narrow working environment (e.g., gun barrel, tiny tube) or inspectors who would like to scrutinize a specific part in a short distance. You can obtain more detail image by this probe than observe by a normal focus probe.



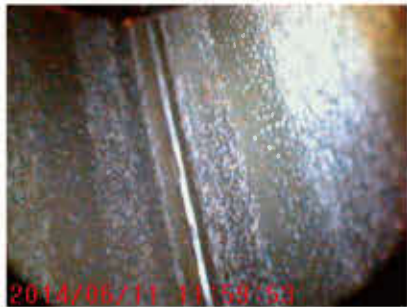
General Probe



General Probe



General Probe



Near Focus Probe



Near Focus Probe



Near Focus Probe



| Insertion tube & Camera System | |
|--------------------------------|---------------------------------------|
| Diameter | Φ 5.5 mm |
| Camera Head Length | 20 mm |
| Material | Soft-Metal (SM) / Semi-Rigid (SR) |
| Length | SM : 1m / 3m SR : 1m |
| Head Material | Stainless steel |
| Resolution | VGA (640 x 480) |
| Light Source | White LED. 224mcd * 4 LED |
| D.O.F. | 6 ~ 16mm (0.6cm ~ 1.6 cm) |
| F.O.V. | 60.7 degree (Diagonal) |
| Working Temperature | -20°C ~ 65°C |
| Waterproof | IP67 |
| Video Out Format | NTSC |
| Main Console | JF Series, JK Series, JM Series |

Hyperion® Function

Hyperion, can further enhance the articulation probe with:

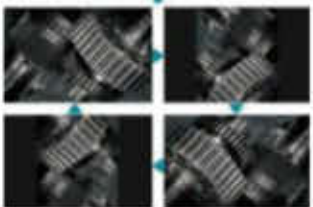
- Clearer images on monitor (640 x 480 resolution)
- Brighter images in low-light conditions
- Anti-reflection and particle-free view on metal or mirror surface
- 90° view rotations during inspection



BRIGHTER IMAGE
Light enhancement under low - light condition.



ROTATION IMAGE
Four 90° view rotation to identify codes.



ANTI-REFLECTION
Reduce reflection on metal or mirror surface.



PARTICLE-FREE
To eliminate the dust on the mirror without wipe.



VGA Series Probe



Φ 6.0 mm
2 Way Articulation Wireless Probe (VGA)



Φ 6.0 mm
2 Way Articulation Probe (VGA)



Φ 5.5 mm VGA Probe



Φ 5.5 mm VGA Probe (Near Focus)

Pipe Inspection Probe



Φ 22 mm / Φ 28 mm
22 m / 30 m

Rock solid reel stand not only improves the image quality, but also provides the convenience and flexibility for your pipe inspection.

- 10mm DEPTH OF FIELD (28mm TIP)
- 150° FIELD OF VIEW (28 mm TIP)
- 90° PASS THROUGH TWO 25,000 times 90° ELBOW BENDS
- IP 68 (CAMERA HEAD)
- IP 65 (REEL)



Φ 28 mm
5 m / 10 m

Pass through two 90° elbow bends



Recommended Combinations



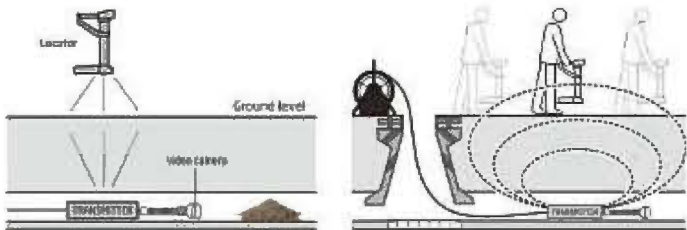
Camera Head

- Interchangeable Camera Head • IP 68 Waterproof
- Bright & Clear Image • 640*480 Resolution • Stainless Steel
- 8 High Brightness LED (3000 lux)



Wireless Detection

Power of the Locator transmitter can detection tube probe position better let the smooth operation.



Optional Accessories



| Locator | |
|---------------------|--------------------------------------|
| Diameter | L: 293.5mm W: 144mm H: 486.5mm |
| Weight | 2kg |
| Power Source | 3.7V / 200mA Li battery |
| Power Consumption | 282mA |
| Battery Charge | 3 ~ 4 hours |
| Power Cycle | 6 ~ 7 hours |
| Power Adaptor | 5.5V , 1.8A |
| Working Temperature | -10° ~ 60° |
| Storage Temperature | -20° ~ 80° |
| Drop Resistance | 60cm |
| Waterproof | IP55 |
| Available | Φ 28mm Length 22m Only |

Optional Accessories

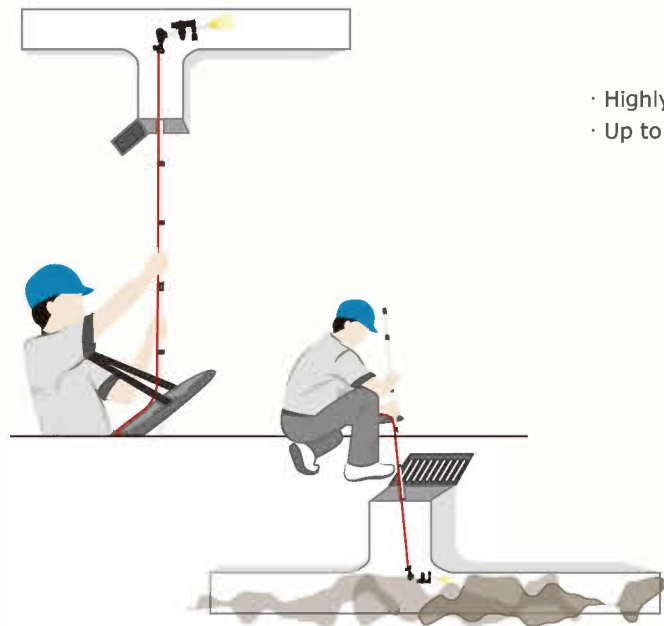
Extension Pole

No climbing and no ladder. Ideal for inspections that to access like ceiling, air-condition duct, bridge, tunnel, sewwe...facilities.

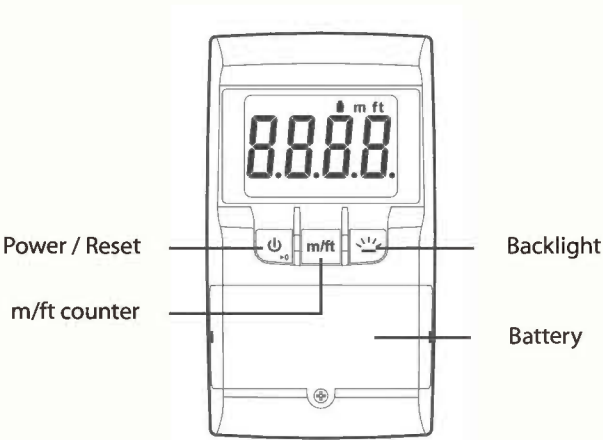


Extension Pole
(120 ~ 503 cm)

- Highly convenient for operation in heavy duty
- Up to 5m inspection



| Extension Pole | |
|--------------------|------------------------------------|
| Length | 120 ~ 503 cm (main pole only) |
| Weight | 1275g (w/o flashlight) |
| Probe Holding Pole | Angle adjustable |
| Flashlight | IP 55 |



| Meter | |
|----------------|--|
| Screen display | LCD |
| Switches | <div><div></div>Power / Reset</div> <div><div></div>m/ft counter</div> <div><div></div>Backlight</div> |
| Dimension | 62 x 110 x 24mm |
| Meter counts | Forward / Rewind |
| Display dlgits | 3 (1 decimal place) |
| Meter display | m/ft |
| Deviation | ± 0.4m(±1.3ft) |
| Waterproof | IP 55 |
| Power source | 2 x AAA (DC 3V) |
| Power capacity | ≥ 90hrs |

| Insertion tube & Camera System | | |
|--------------------------------|---|---|
| Camera Diameter | Φ 22 mm | Φ 28 mm |
| Pipe Diameter | Φ 6 mm | |
| Camera Length | 25mm | 24.3mm |
| Applicable Pipe | Φ40mm-70mm | Φ50mm-100mm |
| Goose neck | 27cm | |
| Pipe Length | 22m | 5m / 10m / 22m / 30m optional |
| Interchangeable Head | NO | Length 22m Only |
| Meter | YES | YES ,(non 5m / 10m) |
| Resolution | 640 * 480 | |
| Camera Material | Stainless Steel | |
| D.O.F | 30mm - 100mm | 10mm - ∞ |
| F.O.V | 62.5°(Diagonal) | 150.8°(Diagonal) |
| Illumination | High Brightness 8 White Led (3000 lux) | |
| Waterproof | Probe-IP68 , Reel-IP65 | |
| Working Temperature | -10°C~60°C | |
| Operating Hour | 3 Hours | |
| Material | Fiber Glass | |
| Flexibility | Continuously 90° sharp turn in Φ40mm / Φ50mm Water Pipe | |
| Whole Reel Diameter | 30cm | |
| Main Console | JF Series, JK Series, JL Series, JM Series | JF Series, JK Series, JL Series, JM Series Length: 5m/10m JF Series Only |