



JUST

*JUST Tehcnology Corporaton* have been in accordance with the management philosophy of Profession, Integrity, Quality, Innovation, and Service to provide the products and services of world class. The quality of our products keeps improving to fulfill the needs of schools, medical science and industrial businesses and to have them with reasonable costs get the best quality assurance and after-sales services for their procurement.

Having received the positive responses and criticism, JUST Technology Corporation is to cope with the needs of our customers by increasing our product's types. We sincerely hope to receive your advice to make us grow, and your comments should be our driving forces. In the near future, we hope that we can serve you.

Our complete services ranging from maintenance to technical consultations are well explained and served by specified persons. For further information, please feel free to call us or visit our website.

# JF Series

JF Series | Video Broescope  
For Fast and Accurate Inspection



- LED BRIGHTNESS ADJUSTMENT
- JPG FORMAT 640 \* 480 PIXEL
- AVI FORMAT 320 \* 240 PIXEL
- USB TO PC CONNECTION
- MIRROR VIEW
- 1.5X ZOOM
- AV OUT NTSC / PAL

Feature Function

- 3.5" TFT LCD
- LED brightness adjustment
- 2X Zoom in and Mirror image
- AV out
- Snap shot and Video recording
- Long duty hour up to 4 hrs



Standard Accessories



Series Accessories





Application

- Automobiles • Aircrafts • Ships • Railways • Welding • Architecture
- Mechanical equipment • Generators • Electricity • Manufacture
- General equipment • Gas, petroleum, and chemicals
- Defense, security, and surveillance
- Exploration, education, and research and experiments.



Video Output

Recorded video & images can be displayed directly to a TV screen for large screen viewing. Support " PAL " / " NTSC " video system.



USB Connection

JF Series is capable to transfer captured images and view from PC. Support Windows 2000™ or later version. No specific software is required to palyback the JPG and ASF files.



Measure Software Kit (Optional)

Inspection Management Software is designed for image viewing, distance measuring, and image comparison. It helps inspectors to verify measurement after leaving the inspection site.



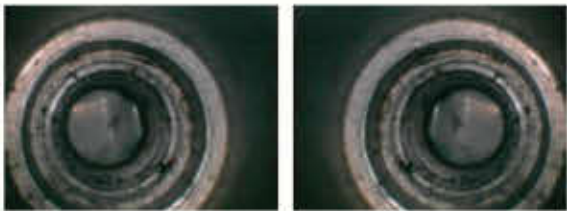
3.5" TFT LCD Display

Embedded with a 3.5" TFT LCD Monitor provides superior image quality photos for inspector to see.



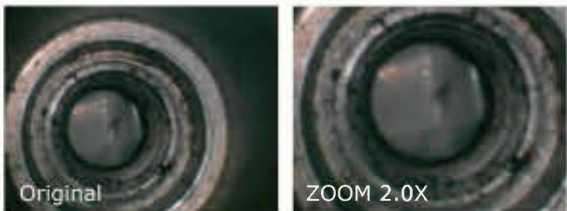
Mirror Image

Support mirror image function on display.



2.0X Zoom - In

Support up to 2X Digital Zoom.



Main Console System ( Display )	
Display	3.5" TFT LCD QGVA
Power	Battery rechargeable Li-Polymer battery 3.7V Power supply AC100-240V 50-60Hz Power consumption DC5.5 1.8A
Interface	USB.20 / AV Out
Video out Format	NTSC & PAL
Storage	8GB SD card
Compression Format	MPEG4
Image Storage Format	JPEG ( 640 * 480 )
Video Recording Format	AVI (320 * 240 )
Frame Rate	~30 fps
S/N Rate	42dB or more
Exposure	Automatic
White Balance	Fix
Working temperature	0°C ~ 60 °C
Storage temperature	0°C ~ 60 °C
Languages	27 Languages: English / French / German / Italian / Spanish / Portuguese / Japanese / Traditional Chinese / Simplified Chinese / Danish / Dutch / Polish / Russian / Bulgarian / Turkish / Swedish / Finnish / Norwegian / Estonian / Lithuanian / Latvian / Hungarian / Czech / Slovak / Slovenian / Romanian / Greek
Dimension	117.5 * 207 * 37mm
Weight	0.395kg ( 0.87 lb )

Insertion Probe Options

Probe	Material	Probe Diameter	Tube Length	Detail
General Probe	Soft-Metal	Φ 5.5 mm	1m / 2m / 3m / 5m / 10m / 20m / 30m	P. 17 - 18
General Probe	Semi-Rigid	Φ 3.9 mm / Φ 5.5mm / Φ 8.5 mm	1m / 2m / 3m	P. 17 - 18
Dual-Camera Probe	Semi-Rigid	Φ 4.9 mm	1m / 2m / 3m	P. 19
2 Way Articulation	Soft-Metal	Φ 6.0 mm	1m / 2m / 3m	P. 20
2 Way Articulation (VGA)	Soft-Metal	Φ 6.0 mm	1m / 2m / 3m	P. 21 - 24
VGA Probe	Soft-Metal	Φ 5.5 mm	1m / 2m / 3m / 5m	P. 22 - 24
VGA Probe	Semi-Rigid	Φ 5.5 mm	1m / 3m	P. 22 - 24
VGA Probe (Near Focus)	Soft-Metal	Φ 5.5 mm	1m / 3m	P. 22 - 24
VGA Probe (Near Focus)	Semi-Rigid	Φ 5.5 mm	1m	P. 22 - 24
Pipe Inspection Probe	Hard Soft-Metal	Φ 6.0 mm, Φ 22 mm (camera head) Φ 6.0 mm, Φ 28 mm (camera head)	22m 5m / 10m / 22m / 30m	P. 25 - 28



Φ 3.9 mm Probe  
Front view / Side view  
(Semi - rigid)  
1m / 2m / 3m



Φ 5.5 mm Probe  
(Semi - Rigid)  
1m / 2m / 3m



Φ 5.5 mm Probe  
Front view / Side view  
(Soft - Metal)  
1m / 2m / 3m / 5m / 10m / 20m / 30m



Φ 8.5 mm Probe  
(Semi - Rigid)  
1m / 2m / 3m



3.9 mm Extremely Small

It's the smallest diameter Insert Probe on the market, only Ø3.9mm.



3.9 mm



Other diameter



JF Series



JK Series



JL Series



JM Series

Front / Side View optional

You can select the corresponding camera in accordance with the circumstances you need.  
Only for Ø3.9mm, Ø5.5mm



90° Side View



Front View

Insertion tube & Camera System

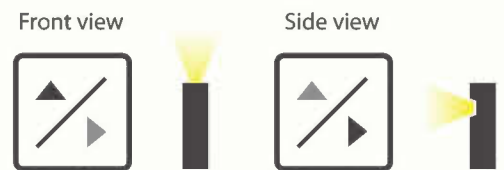
Diameter	Φ 3.9 mm Extremely small	Φ 5.5 mm	Φ 8.5 mm
Material	Semi-Rigid ( SR )	Soft-Metal ( SM ) Semi-Rigid ( SR )	Semi-Rigid ( SR )
Type of Camera	Front / Side view	SM : Front / Side view SR : Side view	Front view
Length	1m / 2m / 3m	SM : 1m / 2 m / 3m / 5m 10m / 20m / 30m SR : 1m / 2m / 3m	1m / 2m / 3m
Light Source	Front view: White LED * 3 Side view: White LED * 2	Front / Side view White LED * 4	White LED * 6
F.O.V	57 °		
D.O.F	1 ~ 6 cm		
Frame Rate	~ 30 fps		
Exposure	Automatic		
White Balance	Fixed		
Resolution Pixels (Dynamic / Static)	QVGA ( 320 * 240 )		
Image Sensor	CMOS Image Sensor		
Main Console	JF Series, JK Series, JL Series, JM Series		

SM = Soft-Metal, SR = Semi-Rigid



Dual - Camera

One Click Switch



Daul Cameras Probe  
( Semi - Rigid )  
1m / 2m / 3m

Insertion tube & Camera System	
Diameter	Φ 4.9 mm
Type of Camera	Daul Cameras ( Front & Side view)
Camera Resolution	320 * 240
Head Length	28 mm
Head Material	Stainless steel
Connector	Metal
Light Indicate	Green light (forward view), Red light (side view)
Light Source	Forward: 140-224 mcd*2 LED Side: 210-330 mcd*1
Length	1m / 2m / 3m
Material	Semi-Rigid
F.O.V	Horizontal field angle 45.2° Vertical field angle 34° Diagonal field angle 56°
D.O.F	1 ~ 6 cm
Working Temperature	0°C ~ 55°C
Waterproof	IP67
Main Console	JF Series, JK Series, JL Series, JM Series



0° Frontward view



90° Side view



JM Series



JK Series



JL Series



JF Series

2 Way Articulation



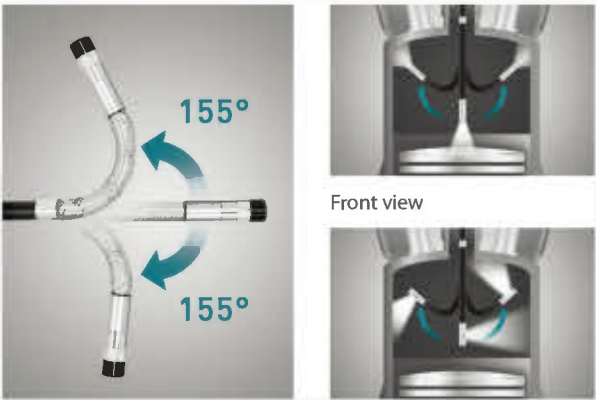
2 Way Articulation Wireless Probe  
( Front View / Side View )  
1m / 2m / 3m



2 Way Articulation  
( Front View / Side View )  
1m / 2m / 3m

2 WAY ARTICULATION

2 way articulation probe helping to check angles that hardly can be checked easily (over 300° of view ).  
Front view and Side view optional.



Left / Right 155°

Side view



JM Series



JK Series



JF Series

Insertion tube & Camera System		
	2 Way Articulation Wireless Probe	2 Way Articulation Probe
Type of Probe	Wireless	Wired
Type of Camera	Front view / Side view	
Diameter	Φ 6 mm	
Resolution	325(H)* 250(V)	
Head Material	Stainless steel	
Light Source	White LED	
Length	1m / 2m / 3m	
F.O.V	Horizontal field angle 45.2° Vertical field angle 34° Diagonal field angle 56°	
D.O.F	1 ~ 6 cm	
Material	Soft-Metal	
Working Temperature	0°C ~ 60°C	
Articulation Angle	Left: 155° / Right: 155°	
Articulation Radius	Front View: 48 +/-1mm / Side View: 60 +/-1mm	
Waterproof	IP67	
Dimension	139.3 * 34.9 * 31.8mm	
Weight	1m-260g / 2m-340g / 3m-420g	1m-370g / 2m-450g / 3m-530g
Battery	Rechargeable Li-Polymer battery 3.7V	None
Lightness Control	Variable	None
Main Console	JM Series	JF Series, JK Series, JL Series, JM Series

# VGA Series

## Specification Introduction

### 2 Way Articulation Probe



2 Way Articulation Wireless Probe (VGA)

1m / 2m / 3m

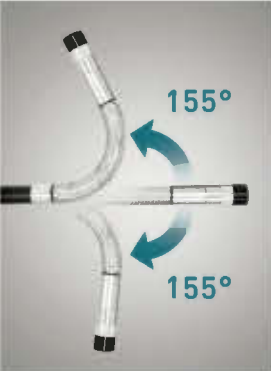


2 Way Articulation Probe (VGA)

1m / 2m / 3m

### 2 WAY ARTICULATION

2 way articulation probe helping to check angles that hardly can be checked easily (over 300° of view).



Left / Right 155°



Front view

Insertion tube & Camera System		
	2 Way Articulation Wireless Probe(VGA)	2 Way Articulation Probe(VGA)
Type of Probe	Wireless	Wired
Type of Camera	Front view	
Diameter	Φ 6 mm	
Resolution	VGA ( 640 * 480 )	
Head Material	Stainless steel	
Light Source	White LED. 224mcd * 3 LED	
Length	1m / 2m / 3m	
F.O.V.	87.1 degree (Diagonal)	
D.O.F	1 ~ 10 cm	
Material	Soft-Metal	
Working Temperature	-20 ~ 65 °C	
Articulation Angle	Left: 155° / Right: 155°	
Articulation Radius	50mm+ / -5mm	
Waterproof	IP67	
Dimension	139.3 * 34.9 * 31.8mm	
Weight	220g	
Battery	Rechargeable Li-Polymer battery 3.7V	None
Lightness Control	Variable	None
Main Console	JM Series	JF Series, JM Series, JM Series



JM Series



JK Series



JF Series

### Basic / Near Focus



Φ 5.5 mm VGA Probe ( Soft-Metal / Semi-Rigid )

SM : 1m / 2m / 3m / 5m  
SR : 1m / 3m

Insertion tube & Camera System	
Diameter	Φ 5.5 mm
Camera Head Length	20 mm
Material	Soft-Metal ( SM ) / Semi-Rigid ( SR )
Length	SM : 1m / 2m / 3m / 5m SR : 1m / 3m
Head Material	Stainless steel
Resolution	VGA (640 x 480)
Light Source	White LED. 224mcd * 4 LED
D.O.F.	1 ~ 6cm
F.O.V.	60.7 degree (Diagonal)
Working Temperature	-20°C ~ 65°C
Waterproof	IP67
Video Out Format	NTSC
Main Console	JF Series, JM Series, JM Series

### MATERIAL OF PROBE

Soft-Metal: Soft bendable and resilient.  
Semi-Rigid: Bendable and can be in fixed position.

Soft-Metal

Semi-Rigid



Φ 5.5 mm  
VGA Near Focus Probe  
( Soft-Metal / Semi-Rigid )

SM : 1m / 3m  
SR : 1m



Near Focus

Near Focus / Short Focus Probe is suitable for a narrow working environment (e.g., gun barrel, tiny tube) or inspectors who would like to scrutinize a specific part in a short distance. You can obtain more detail image by this probe than observe by a normal focus probe.



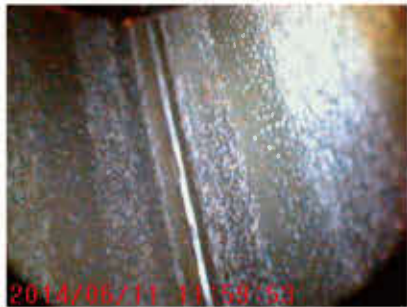
General Probe



General Probe



General Probe



Near Focus Probe



Near Focus Probe



Near Focus Probe



Insertion tube & Camera System	
Diameter	Φ 5.5 mm
Camera Head Length	20 mm
Material	Soft-Metal ( SM ) / Semi-Rigid ( SR )
Length	SM : 1m / 3m SR : 1m
Head Material	Stainless steel
Resolution	VGA (640 x 480)
Light Source	White LED. 224mcd * 4 LED
D.O.F.	6 ~ 16mm ( 0.6cm ~ 1.6 cm )
F.O.V.	60.7 degree (Diagonal)
Working Temperature	-20°C ~ 65°C
Waterproof	IP67
Video Out Format	NTSC
Main Console	JF Series, JK Series, JM Series

Hyperion® Function

Hyperion, can further enhance the articulation probe with:

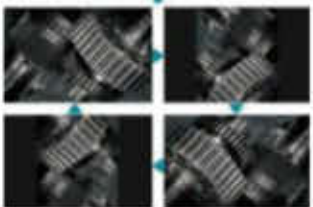
- Clearer images on monitor ( 640 x 480 resolution )
- Brighter images in low-light conditions
- Anti-reflection and particle-free view on metal or mirror surface
- 90° view rotations during inspection



**BRIGHTER IMAGE**  
Light enhancement under low - light condition.



**ROTATION IMAGE**  
Four 90° view rotation to identify codes.



**ANTI-REFLECTION**  
Reduce reflection on metal or mirror surface.



**PARTICLE-FREE**  
To eliminate the dust on the mirror without wipe.



VGA Series Probe



Φ 6.0 mm  
2 Way Articulation Wireless Probe (VGA)



Φ 6.0 mm  
2 Way Articulation Probe (VGA)



Φ 5.5 mm VGA Probe



Φ 5.5 mm VGA Probe (Near Focus)



# Pipe Inspection Probe



Φ 22 mm / Φ 28 mm  
22 m / 30 m

Rock solid reel stand not only improves the image quality, but also provides the convenience and flexibility for your pipe inspection.

- 10mm  
DEPTH OF FIELD  
(28mm TIP)
- 150°  
FIELD OF VIEW  
(28 mm TIP)
- 90°  
PASS THROUGH TWO  
90° ELBOW BENDS
- IP 68  
(CAMERA HEAD)
- IP 65  
(REEL)



Φ 28 mm  
5 m / 10 m

## Pass through two 90° elbow bends



## Recommended Combinations



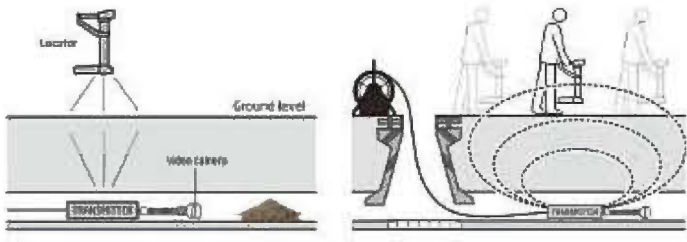
## Camera Head

- Interchangeable Camera Head • IP 68 Waterproof
- Bright & Clear Image • 640\*480 Resolution • Stainless Steel
- 8 High Brightness LED (3000 lux)



## Wireless Detection

Power of the Locator transmitter can detection tube probe position better let the smooth operation.



## Optional Accessories

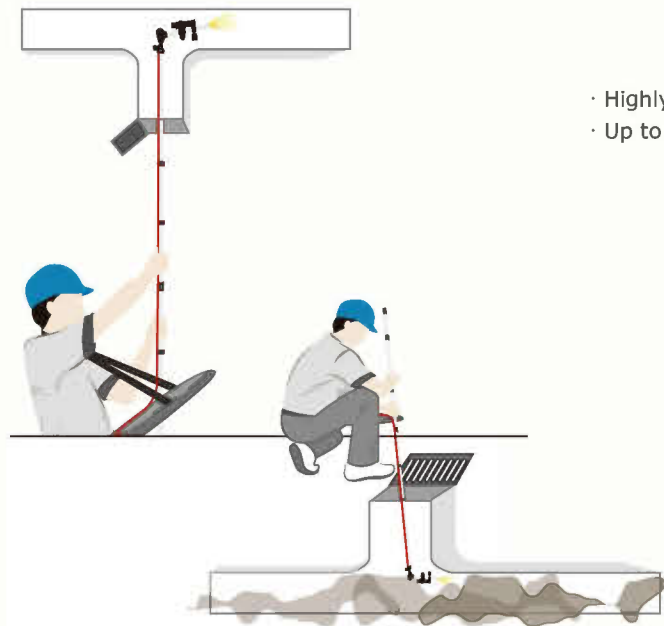
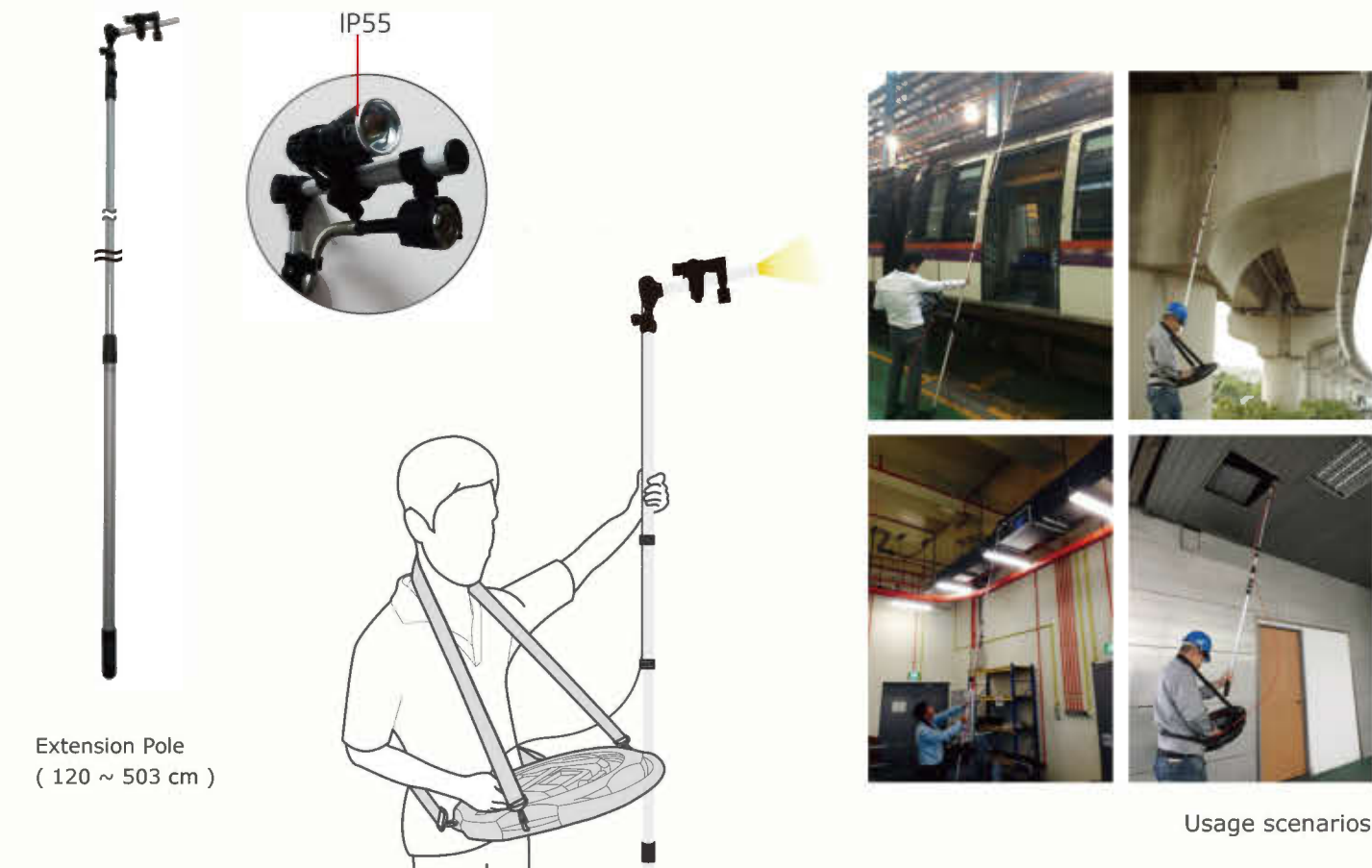


Locator	
Diameter	L: 293.5mm W: 144mm H: 486.5mm
Weight	2kg
Power Source	3.7V / 200mA Li battery
Power Consumption	282mA
Battery Charge	3 ~ 4 hours
Power Cycle	6 ~ 7 hours
Power Adaptor	5.5V , 1.8A
Working Temperature	-10° ~ 60°
Storage Temperature	-20° ~ 80°
Drop Resistance	60cm
Waterproof	IP55
Available	Φ 28mm Length 22m Only

Optional Accessories

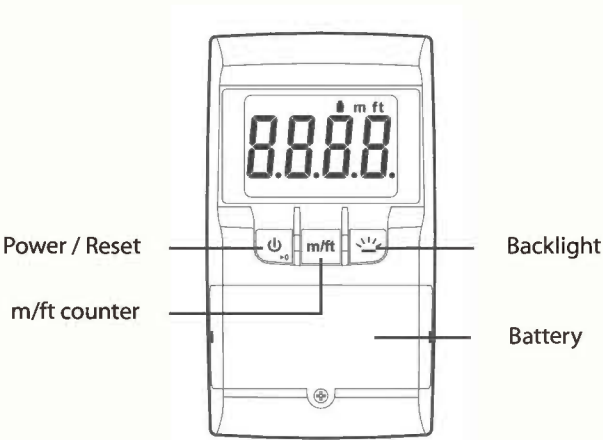
Extension Pole

No climbing and no ladder. Ideal for inspections that to access like ceiling, air-condition duct, bridge, tunnel, sewwe...facilities.



- Highly convenient for operation in heavy duty
- Up to 5m inspection

Extension Pole	
Length	120 ~ 503 cm ( main pole only)
Weight	1275g ( w/o flashlight )
Probe Holding Pole	Angle adjustable
Flashlight	IP 55



Meter	
Screen display	LCD
Switches	<div><div></div>Power / Reset</div> <div><div></div>m/ft counter</div> <div><div></div>Backlight</div>
Dimension	62 x 110 x 24mm
Meter counts	Forward / Rewind
Display dlgits	3 (1 decimal place)
Meter display	m/ft
Deviation	± 0.4m(±1.3ft)
Waterproof	IP 55
Power source	2 x AAA (DC 3V)
Power capacity	≥ 90hrs

Insertion tube & Camera System		
Camera Diameter	Φ 22 mm	Φ 28 mm
Pipe Diameter	Φ 6 mm	
Camera Length	25mm	24.3mm
Applicable Pipe	Φ40mm-70mm	Φ50mm-100mm
Goose neck	27cm	
Pipe Length	22m	5m / 10m / 22m / 30m optional
Interchangeable Head	NO	Length 22m Only
Meter	YES	YES ,( non 5m / 10m )
Resolution	640 * 480	
Camera Material	Stainless Steel	
D.O.F	30mm - 100mm	10mm - ∞
F.O.V	62.5°(Diagonal)	150.8°(Diagonal)
Illumination	High Brightness 8 White Led (3000 lux)	
Waterproof	Probe-IP68 , Reel-IP65	
Working Temperature	-10°C~60°C	
Operating Hour	3 Hours	
Material	Fiber Glass	
Flexibility	Continuously 90° sharp turn in Φ40mm / Φ50mm Water Pipe	
Whole Reel Diameter	30cm	
Main Console	JF Series, JK Series, JL Series, JM Series	JF Series, JK Series, JL Series, JM Series Length: 5m/10m JF Series Only